



**MFA S-367 and S-367V**  
**DISPOSIBLE PARTICULATE RESPIRATORS**  
 Respiratory Mask for Protection Against  
 Low Level Hazardous Solid and Water Based Aerosols  
**Class: FFP3**

## TECHNICAL DATASHEET

### PRACTICAL PERFORMANCE RESULTS

### TRADITIONAL CHOICE IN RESPIRATORY PROTECTION

#### Filter penetration

Model	Paraffin Penetration*	Limit
S-367 and S-367V	<b>%0,136</b>	<b>&lt; %1</b>

\* Average of Test Results of Penetration for Paraffin Oil Mist (Flow Rate % 1.6 dm<sup>3</sup> s )

#### Inhalation Resistance

Model	Inhalation Resistance*	Limit
S-367 and S-367V	<b>0,971 mbar</b>	<b>&lt; 3mbar</b>

\* Average of Test Results of Inhalation Resistance (Flow rate 1,6 dm<sup>3</sup> s )

#### Exhalation Resistance

Model	Exhalation Resistance*	Limit
S-367	<b>1,518 mbar</b>	<b>&lt; 3mbar</b>
S-367V	<b>1,238 mbar</b>	<b>&lt; 3mbar</b>

\* Average of Test Results of Exhalation Resistance (Flow rate 2,7 dm<sup>3</sup> s )

#### Applications

Product	EN 149:2001 +A1:2009 Classification	Maximum Workplace Exposure Limit (WEL)*
S-367	<b>FFP3 NR D</b>	<b>50</b>
S-367V	<b>FFP3 NR D</b>	<b>50</b>

\*Many countries apply Assigned Protection Factors (APFs) which reduce the maximum concentrations of particles in which these products can be used. See national regulations and EN 529:2005.

#### Materials

Plastic Outer Layer	: Polypropylene
Nonwoven Inside Layer	: Polypropylene
Nonwoven Electrostatic Filter	: Polypropylene
Head Band	: Knitted elastic band
Nose Foam	: Polyethylene Soft
Valve	: Polypropylene
Valve Diaphragm	: Thermo Plastic Elastomer / Silicone

#### Approval

Our disposable particulate respirators has been tested and certificated by the BSI, Notified Body of the European Community (Number 0086). The filtering half masks produced true the relevant EU regulation EU 2016/425, standards from EN 149: 2001 + A1: 2009 FFP3 NR D and CE marked.

#### Designations:

NR = Non Reusable (Single Shift Use Only)

D = Meets The Clogging Resistance Requirements

#### Certificates

CE EN 149:2001+A1:2009 NR D  
 ISO 9001:2008 Quality Management System  
 ISO 13485:2003 Medical Devices Quality Management System

**MFA S-367 and S-367V**  
**DISPOSIBLE PARTICULATE RESPIRATORS**  
 Respiratory Mask for Protection Against  
 Low Level Hazardous Solid and Water Based Aerosols  
**Class: FFP3**



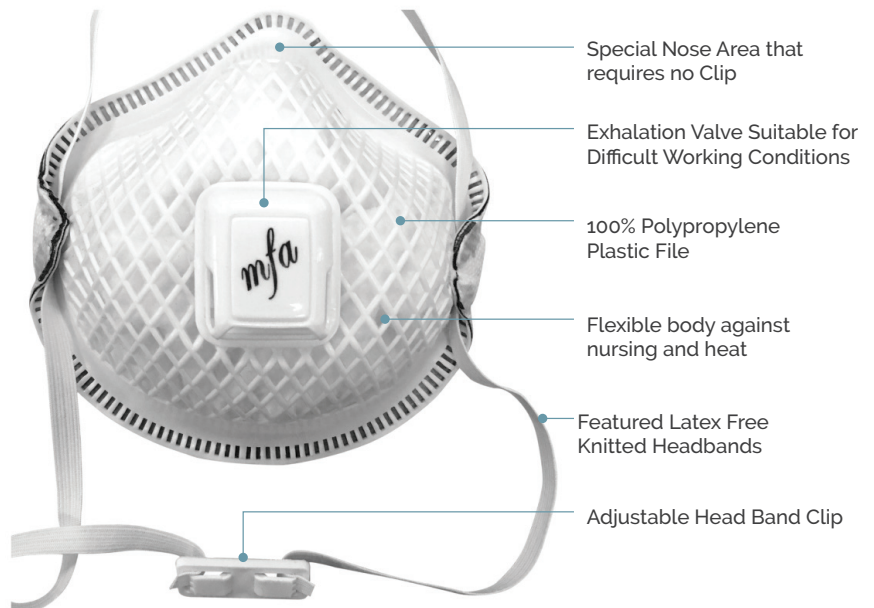
**TOP STANDARDS IN COMFORT**

MFA Super Series masks are special products designed to deliver solutions for the needs of users who work in risky, hard and challenging conditions. These products offer all features such as quality, comfort, aesthetics, safety, flexible structure, long service life, high performance, etc. No working condition can deform these products. Our camber-assembled corrugated filters deliver excellent performance. Highly low inhalation and exhalation resistance is instantly felt by the users. Super Series masks are more than a dust mask for the users. The masks are comfort, safety and performance products especially for the users who work in the hard working conditions.

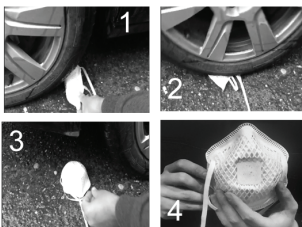
They are uttermost resistant to collapse and deformations. They do not lose their form characteristic even when a vehicle passes over them. (PICTURE 1)

The adjustment clip is all-purpose and comfortable with its folding-adjustable feature. Thanks to this feature, it allows making compactness adjustment suitable for every face and hanging the mask onto your neck when you do not use it. (PICTURE 2)

In the comfort models, the soft sealing ring on the interior surface crowns the tightness on various faces and the comfort sense. It is composed of three special layers and offers very superior comfort with extra absorbing viscose fabric which is elegant for the skin and which offers comfort, polyurethane sponge with special softness and its porous structure between the viscose fabric, and nonwoven mat enclosing sweat and moisture at the lower layer. (PICTURE 3)



The low breathing in and breathing out resistance is immediately felt by the users owing to its special fibrous structure which is formed by spraying at micron dimension. Our special air fibrous and electrostatic filter do not allow the transition of particles. (PICTURE 4)



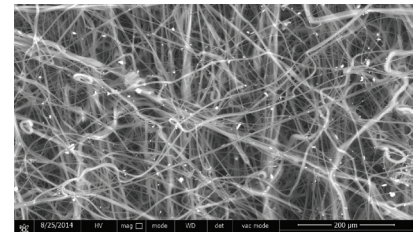
PICTURE 1



PICTURE 2



PICTURE 3



PICTURE 4

\* Passed dolomite dust test. It provides protection for minimum 8 hours

**WHAT IS DOLOMITE DUST TEST?**

This is an optional performance test defined in EN 149: 2001+A1:2009 standard. It demonstrates that the mask provides efficient protection for minimum 8 hours. The masks passing this test bear "D" marking (e.g. FFP3 D). Choose the masks with "D" marking while purchasing them and make sure that your mask can be used safely for minimum 8 hours.

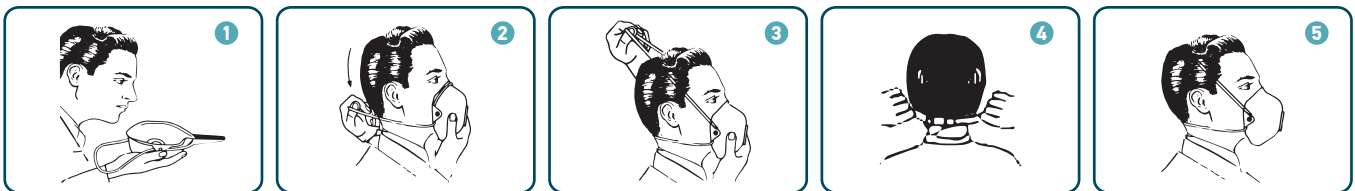


**MFA S-367 and S-367V**  
**DISPOSIBLE PARTICULATE RESPIRATORS**  
 Respiratory Mask for Protection Against  
 Low Level Hazardous Solid and Water Based Aerosols  
**Class: FFP3**

TECHNICAL DATASHEET

**Fitting Instructions**

Before fitting the respirator, ensure hands are clean. With reverse side up and using the tab, separate top and



1. Turn the mask backwards so that the headbands are visible. Place the mask under your chin. Make sure that the two strips are not entwined and slap the strips on your head, one at a time.
2. Place the lower strip with the adjusting buckle under your ears.
3. Place the upper strip on top of your head.
4. For full comfort, place the mask on your face in the most comfortable way and adjust the tightness from your nape.
5. Take a deep breath by covering the mask with your both hands to check that it is seated properly. If you feel air flow around your nose, check the tightness adjustment.

*IMPORTANT: It is highly important to train the users for correct use of the product. When it become difficult to breath or the mask is damaged or deformed, or it does not fit the face, the mask should be immediately replaced. The instructions should be carefully followed as an important step in safe use of the mask.*

**CONTROLS BEFORE USAGE**

- Before use, read the instructions carefully
- Check the date of the end of shelf life
- Check the suitability of the mask to the area where used, looking at the signs on the mask.
- Check the head bandages of the mask.
- Check the nose clips of the mask.
- Check the mask if there is a damage or not before use.

**Fit Check**

Cover the front of the respirator with both hands being careful not to disturb its fit.

- (a) UNVALVED respirator - EXHALE sharply
- (b) VALVED respirator - INHALE sharply.

If air leaks around the nose, re-adjust the nose clip to eliminate leakage. Repeat the above fit check. If air leaks at the respirator edges, work the straps back along the sides of the head to eliminate leakage. Repeat the above fit check. If you CANNOT achieve a proper fit DO NOT enter the hazardous area. See your supervisor. Users should be fit tested in accordance with national requirements.





**MFA S-367 and S-367V**  
**DISPOSIBLE PARTICULATE RESPIRATORS**  
 Respiratory Mask for Protection Against  
 Low Level Hazardous Solid and Water Based Aerosols  
**Class: FFP3**

**TECHNICAL DATASHEET**

**Warning and Use Limitations**

1. Failure to follow all instructions and limitations on the use of this product could reduce the effectiveness of respirator and result in sickness or death.
2. A properly selected respirator is essential to protect your health. Before using this respirator, consult an Industrial Hygienist or Occupational Safety Professional to determine the suitability for your intended use.
3. This product does not supply oxygen. Use only in adequately ventilated areas containing sufficient oxygen to support life. Do not use this respirator when oxygen concentration is less than 19%.
4. Do not use when concentrations of contaminants are immediately dangerous to health or life.
5. Do not use explosive atmospheres.
6. Leave work area immediately and return to fresh air if (a) breathing becomes difficult, or (b) dizziness or other distress occurs.
7. Facial hairs or beards and certain facial characteristics may reduce the effectiveness of this respirator.
8. Never alter or modify this respirator in any way.
9. NR - Only for single use. No maintenance necessary. Discard the used respirator after single use.
10. Keep respirators in the display box away from direct sunlight until use.

**MARKING:**

MFA S-367 and MFA S-367V FFP3 NR D  0086



EN 149:2001+A1:2009



TP 019/2011  UkrSEPRO

**STORAGE**

- Must be kept in their original package.
- In the storage area, temperature must be between - 20 °C / + 40 °C
- Moist must not be more than % 80.
- If kept under these conditions, shelf life is 5 years.

**PACKAGING DETAILS**

Model	Pcs in Box	Pcs in Carton	Carton Size	Carton Weight
S-367	25	200	55x55x35 cm	7,89 kg
S-367V	25	200	55x55x35 cm	8,69 kg

**SYMBOLS AND PICTOGRAMS**



End of Shelf Life



Storage Temperature Range



Storage Maximum Relative Humidity



Read User Information



Caution